

SHOW DETAILS (algebra, limit laws) in the space next to each problem. Do **NOT** use l'Hôpital's rule. Answers may be a specific number, $+\infty$, $-\infty$, or Does Not Exist (DNE).

YOU MUST GIVE SOME SUPPORTING EVIDENCE. AN ANSWER ALONE WILL NOT RECEIVE FULL CREDIT.

1. $\lim_{x \rightarrow 2} \frac{x^3 - 4x}{x - 2}$

Answer $\lim_{x \rightarrow 2} \frac{x^3 - 4x}{x - 2} = \lim_{x \rightarrow 2} \frac{x(x - 2)(x + 2)}{x - 2} = \lim_{x \rightarrow 2} x(x + 2) = 8.$

2. $\lim_{x \rightarrow 2} \frac{\frac{1}{x} - \frac{1}{2}}{x + 2}$

Answer If $f(x) = \frac{\frac{1}{x} - \frac{1}{2}}{x + 2}$, then $2 + 2 \neq 0$ so $f(x)$ is continuous at 2 and $\lim_{x \rightarrow 2} f(x) = f(2) = 0.$

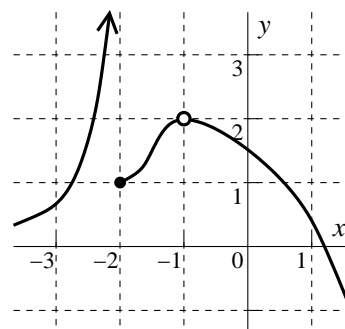
3. $\lim_{x \rightarrow 1} \frac{x^2 - 3x + 2}{2x^2 - x - 1}$

Answer $\lim_{x \rightarrow 1} \frac{x^2 - 3x + 2}{2x^2 - x - 1} = \lim_{x \rightarrow 1} \frac{(x - 1)(x - 2)}{(2x + 1)(x - 1)} = \lim_{x \rightarrow 1} \frac{x - 2}{2x + 1} = -\frac{1}{3}.$

4. $\lim_{x \rightarrow 0} \frac{1 - \sqrt{x^2 + 1}}{x^2}$

Answer $\lim_{x \rightarrow 0} \frac{1 - \sqrt{x^2 + 1}}{x^2} = \lim_{x \rightarrow 0} \left(\frac{1 - \sqrt{x^2 + 1}}{x^2} \right) \left(\frac{1 + \sqrt{x^2 + 1}}{1 + \sqrt{x^2 + 1}} \right) = \lim_{x \rightarrow 0} \frac{1 - (x^2 + 1)}{x^2 (1 + \sqrt{x^2 + 1})}$
 $= \lim_{x \rightarrow 0} \frac{-x^2}{x^2 (1 + \sqrt{x^2 + 1})} = \lim_{x \rightarrow 0} \frac{-1}{1 + \sqrt{x^2 + 1}} = -\frac{1}{2}.$

5. Use the graph displayed to the right to complete the limit statements below. No justification needs to be given.



Answers to 5

$$\lim_{x \rightarrow -2^-} f(x) = +\infty \qquad \lim_{x \rightarrow -2^+} f(x) = 1 \qquad \lim_{x \rightarrow -1} f(x) = 2$$

6. $\lim_{x \rightarrow 4} \frac{\frac{1}{x^2} - \frac{1}{16}}{x - 4}$

Answer $\lim_{x \rightarrow 4} \frac{\frac{1}{x^2} - \frac{1}{16}}{x - 4} = \lim_{x \rightarrow 4} \frac{\frac{16 - x^2}{16x^2}}{x - 4} = \lim_{x \rightarrow 4} \frac{16 - x^2}{16x^2(x - 4)} = \lim_{x \rightarrow 4} \frac{(4 - x)(4 + x)}{16x^2(x - 4)} = \lim_{x \rightarrow 4} \frac{-(4 + x)}{16x^2}$
 $= \frac{-8}{16 \cdot 4^2} = -\frac{1}{32}.$